



IBM Rational Software Development Conference 2008

WHERE TEAMS ARE **R-HEROES**



Instant on agility for geographically distributed small teams

Mats Göthe





GDD | ALM Solution Architect, Rational Green Threads

mats.gothe@se.ibm.com

SDP31

Disclaimer and Non-Disclosure



-  This solution includes products which is currently in Beta
-  IBM Rational Plans are subject to change
-  Nothing in this document is intended to create any representations or warranties
-  IBM Rational warranties are contained in the applicable license agreements

WHERE TEAMS ARE **R-HEROES**



Agenda

The Why of this Solution

Rational Instant-On Appliance

About ClearQuest ALM schema

Early Findings and Conclusions



Agenda



The Why of this Solution

Rational Instant-On Appliance

About ClearQuest ALM schema

Early Findings and Conclusions



The Changing World



2008: Market trends in global software delivery

What we're seeing...

Need for instant project startup to serve agile business demands

Increasingly diverse, outsourced and cross organizationally global project teams

Growing popularity of agile collaborative development, also in global teams

Interest in deploying best open software delivery practices

Popularity of Web-centric and Web 2.0 tool usage models



These shifts are driving demand for new solution approaches ...



Indicators for Instant-On Appliance Needs



- “We’re corporately heavily invested in CQ. We’ve configured them, add our own processes and value. We need a ‘run-time component’ to quickly deploy to acquired teams and new agile projects.”

Configure Appliances /w corp schemas and accelerate deployments

- “We’ve deployed some pilot servers, but really, we are still starting. We have some CM practices in place, not widely enough deployed. Help us with your best practices.”



Accelerate deployments /w Appliance

- “We like a proven solution and like what you have. No skilled admin’s in your product set. Where do you suggest we start?”



Run Pilot or POC using an Appliance



IBM Virtual Appliance Strategy

- IBM SWG is expanding the use of Virtual Images for demonstrations and proof-of-concepts to distribution of Linux-based virtual machine images, or virtual appliances, in external commercial-use offerings.
- Virtual appliances further reduce complexity of the initial installation, configuration and administration of the software and increased solution consumability.
- IBM SWG also forms a new Center of Competence for providing Linux-based virtual machines to our brands, customers and partners.
- IBM Information Management leading the way with SLES10 Enterprise Server images used for Virtualized and Non-Virtualized Commercial Appliances
- Base DB2 Express-C appliances available at www.ibm.com/db2/express with 1500 downloads per month



Agenda



The Why of this Solution

Rational Instant-On Appliance

About ClearQuest ALM schema

Early Findings and Conclusions



Drivers for an Instant-On Solution Appliance



Easy deployment and instant value

VMWare



Ready to use Change Management process and workflows

CQALM



Lean and open process

OpenUP



Commercial level of support, compared to open source

Licensed



Start simple and grow by new projects and more users later on

Scalable



Rational Instant-On Appliance for Agile teams



What

- ▶ Preconfigured Application Lifecycle solution for Change Management
- ▶ Production quality 'as-is' workflows with continuous process refinement options
- ▶ Modern Web 2.0 user interface for globally distributed collaborating teams



How

- ▶ Preconfigured VMWare image for VMWare Player/Workstation/Server/ESX
- ▶ Runs SUSE Linux Enterprise Server v10
- ▶ Uses the out-of-the-box ClearQuest 7.1 ALM schema on DB2 v9.5
- ▶ Uses lean OpenUP process from Eclipse.org
- ▶ Uses open Linux SUSE license. License required for commercial use.
- ▶ Order via IBM PPA and Fulfillment via Partners (or IBM.com download) [TBD]
- ▶ Regular support from IBM, Novel (and VMWare) under purchased support agreement

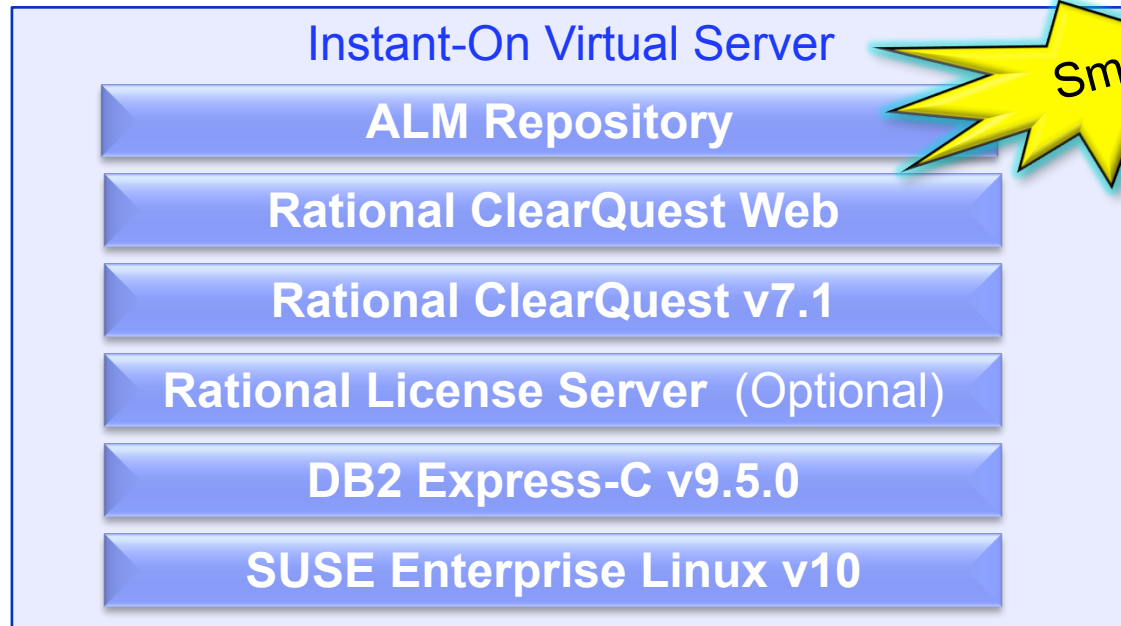
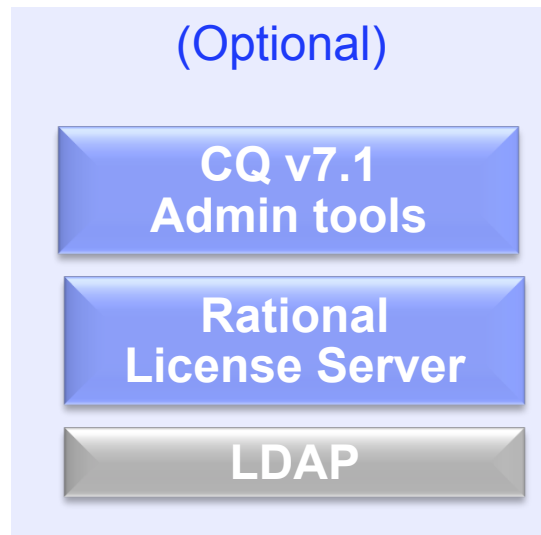


When

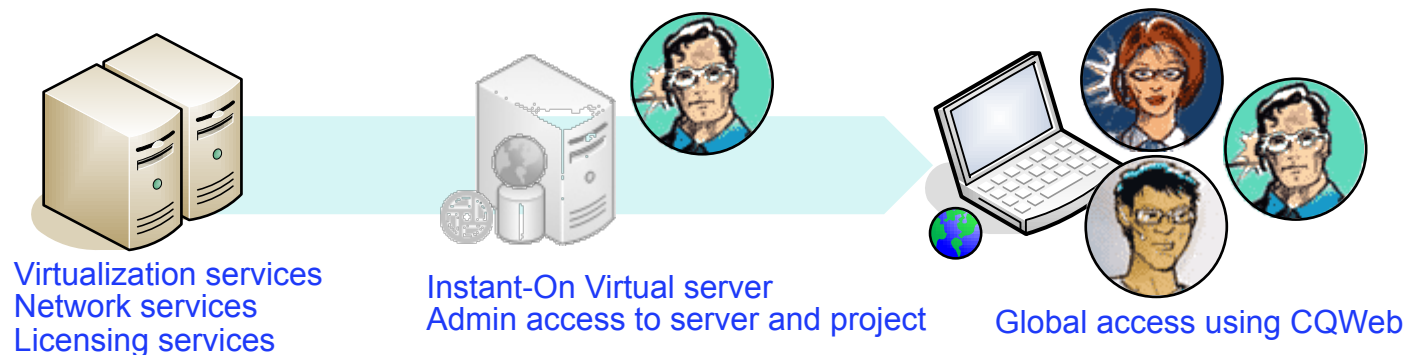
- ▶ Offering currently 'in concept' by Rational
- ▶ Tech preview to be made available
- ▶ Version with ClearQuest 7.1 tentatively available after product GA



Rational Instant-On Appliance – Deployment Architecture



VMWare (Player/WS/Server/ESX)



Rational Instant-On Appliance – Access Architecture

Team access - ClearQuest Web

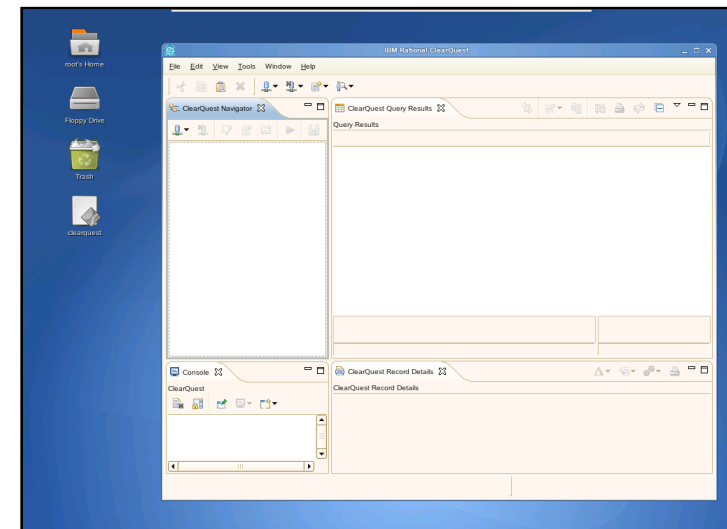
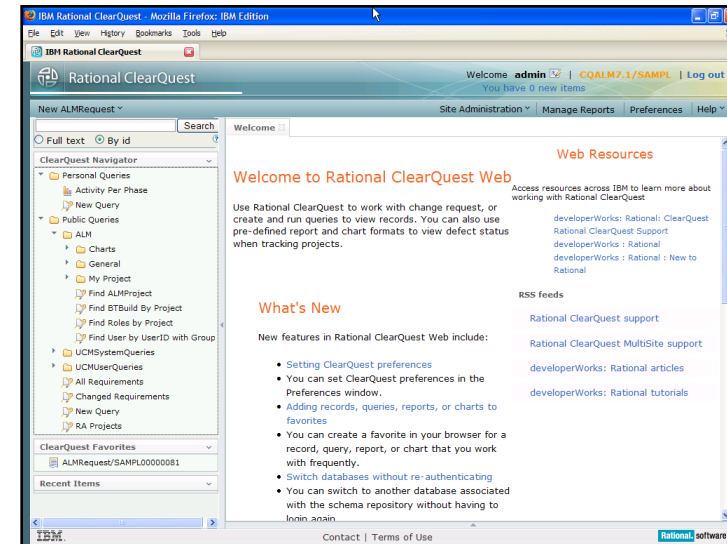
- ▶ Global access to CQWeb over http or https
- ▶ Access to project assets

Admin access - Linux console


- ▶ VNC remote desktop access
- ▶ Linux Server Admin UI
- ▶ DB2 Admin UI
- ▶ ClearQuest Client UI

Admin access – Windows client

- ▶ CQ Admin tools require Windows



Rational InstantOn Appliance – The 7 install steps

	Step	Time / Size
1	Download appliance image (5GB) and VMWare Player	Hour
2	Install VMWare Player (or other VMWare engine)	Minutes
3	Unpack and start image	Minutes
4	Complete guided configuration step	Minutes
5	Acquire and Install ClearQuest license	Minutes
	Login and Go	
[6]	Download and run workshop from DevWorks Consult whitepapers and On-Line Guidance	Hours
[7]	Configure CQALM workflows - Refine team users, roles and security - Refine terminology to conform to your practices - Refine any special asset types or activities	Hour



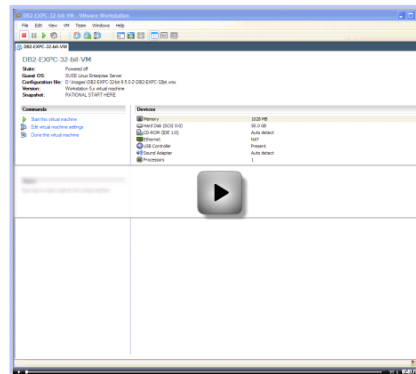
Ka-zap!





InstantOn Install 6 min DEMO

- ▶ Accept license terms
- ▶ Configure server
- ▶ Log in and create first defect



Agenda



The Why of this Solution

Rational Instant-On Appliance

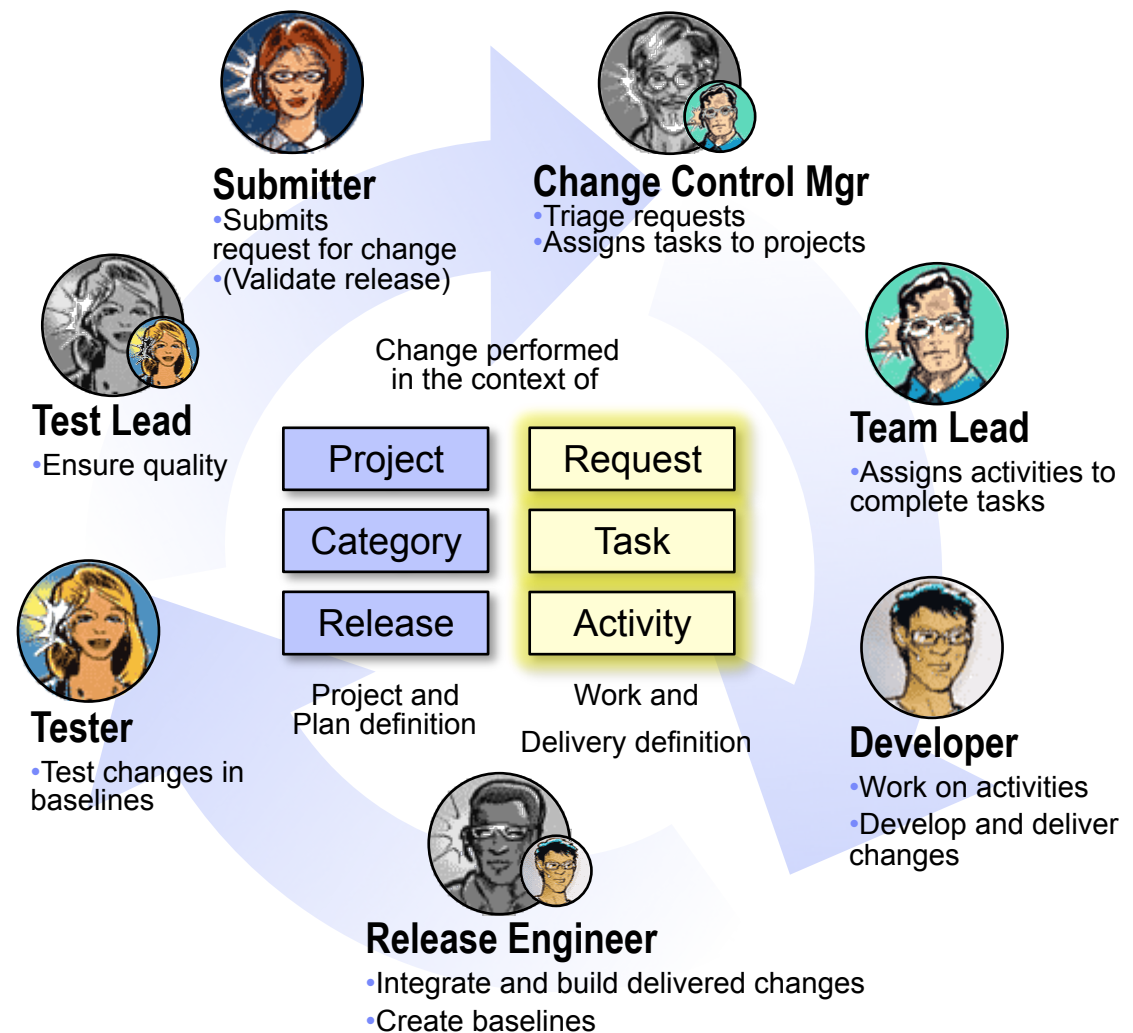
About ClearQuest ALM schema

Early Findings and Conclusions

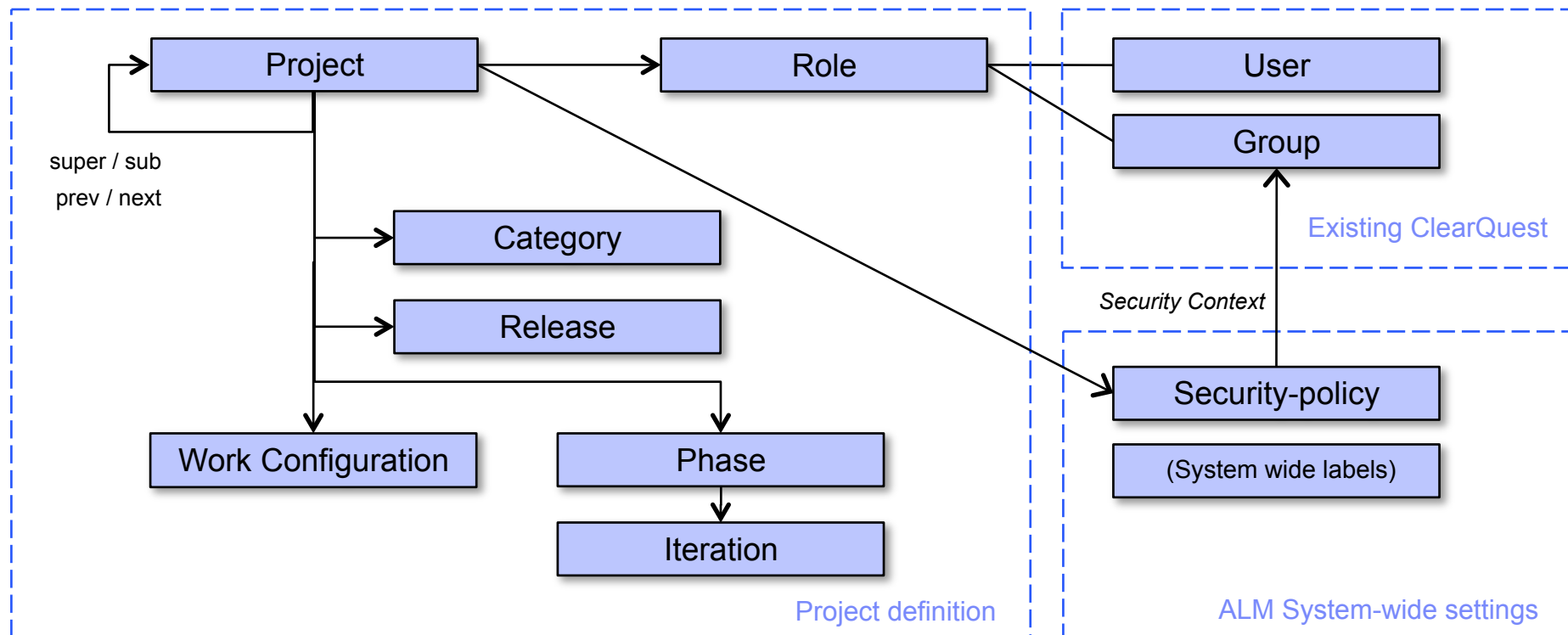


What is Application Lifecycle Management on CQ?

- Out-of-box ALM Solution for ClearQuest (schema and packages)
- Process model focused on work completed in the context of a Project
- Requests are planned as Tasks and performed as Activities
- Workload can be balanced across Phases and Iterations of a Project
- Each project team can customize the process configuration
- Individual assigned roles



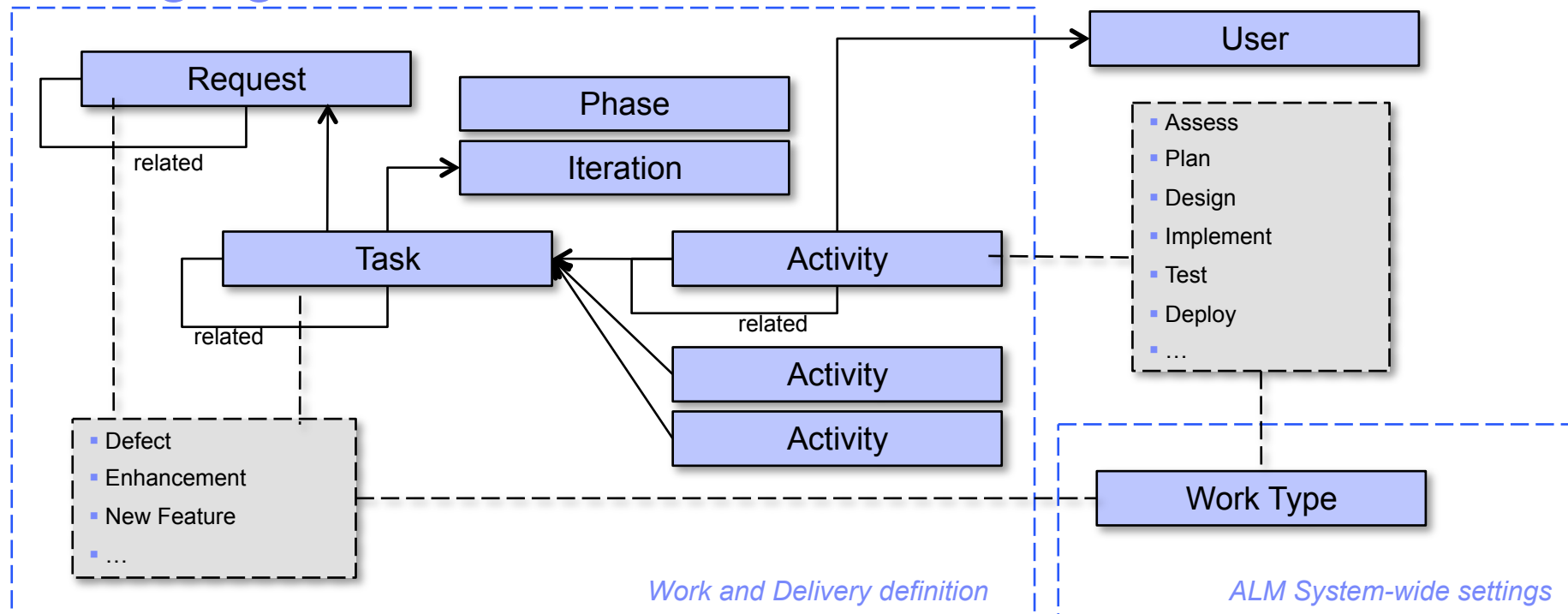
Introducing Projects



- **Projects** provide the context for doing work & are uniquely identified
- **Security** determines visibility, **Roles** determine allowed actions for users
- **Phases** and **Iterations** divide projects into time-boxed deliverables
- Project process, **Work Configuration**, can change without modifying the schema

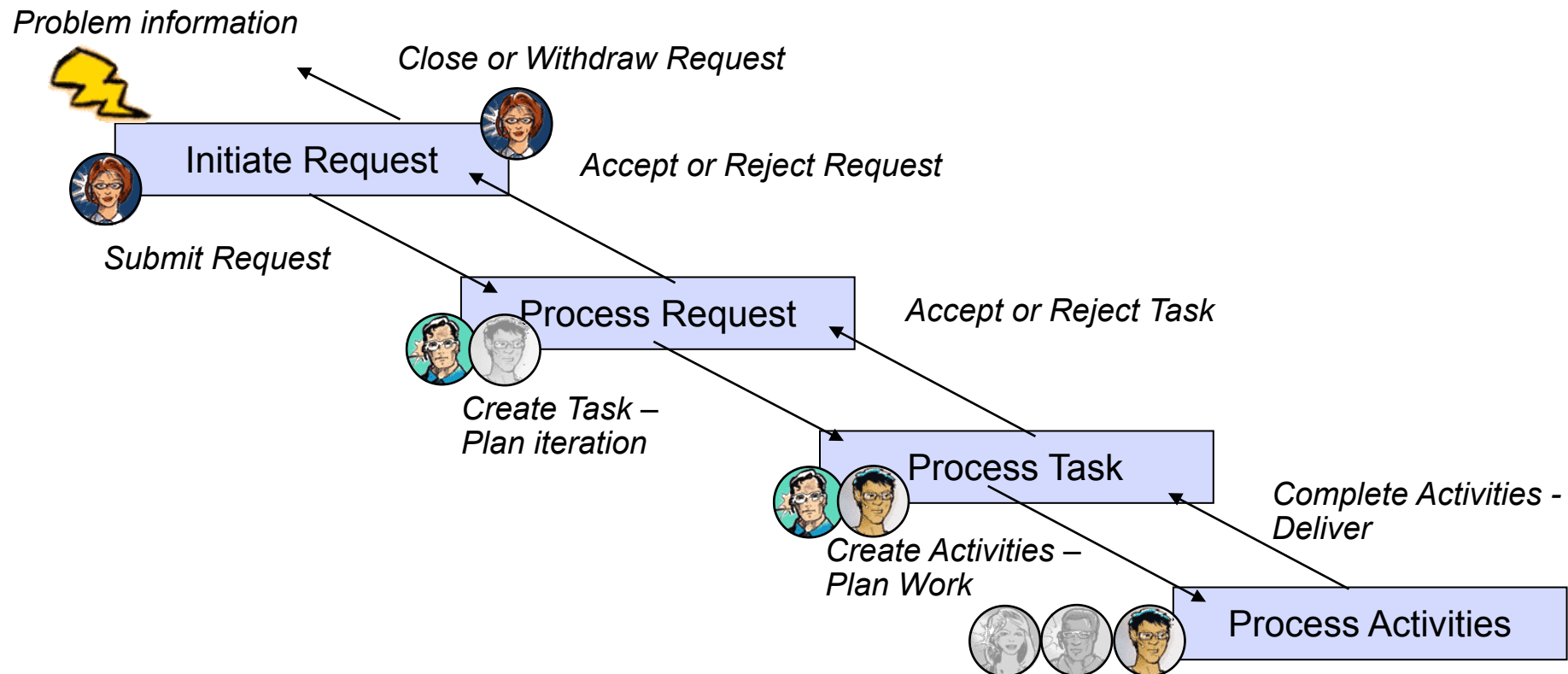


Managing “Work”



- **Requests** define the ‘need’ & where it was ‘found’
- **Tasks** define the work needed to complete the request for a project
- **Activities** are assigned to individuals & collectively complete the Task
- **Work Type** identifies the ‘nature’ of the work

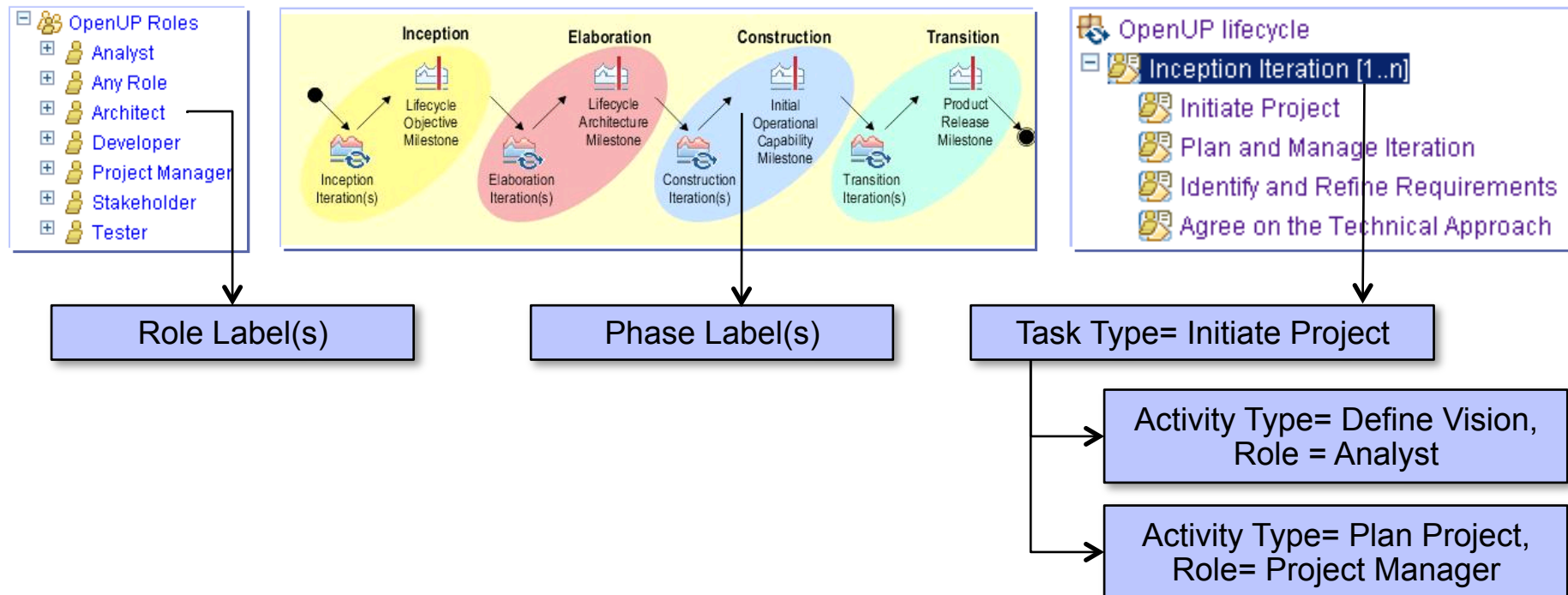
The Flow



- **Requests** are triaged, **Tasks** are created for projects
- **Activities** complete the task
- A completed task is reviewed and the request is closed.

Adaptive Workflow – OpenUP Example

- OpenUP (Open Unified Process)
- An exemplary process in the Eclipse Process Framework project
- OpenUP downloads are available from Eclipse.org
http://www.eclipse.org/epf/downloads/openup/openup_downloads.php



Agenda



The Why of this Solution

Rational Instant-On Appliance

About ClearQuest ALM schema

Early Findings and Conclusions



Improving ROI w/ CQALM – Early Indicators

- Deployment

- Deploy centralized server for Agile GDD team
 - 1-2 days billable time

- Cost savings on a “real” engagement

- 5 months duration, 30-42 days of billable time

- Workflow configuration

- Schema Requirements

- 1 month duration: customer meetings, documentation and review.
- 5-7 days of billable time

- Schema Design

- 1 month duration: customer meetings, documentation, and review.
- 5-7 days of billable time

- Schema Implementation

- 3 Iterations over the course of 3 months
- 15-20 days billable time

- Develop Custom Training for end users

- 5-8 days billable time
- Activities performed during the schema implementation iterations

Solution Deployment Time
Reduced by >100%.

Reduced by 100% Duration
10-15 days billable time

CRUNSH!

Requirements Time
Reduced by 25%.

Design Time
Reduced by 50%.

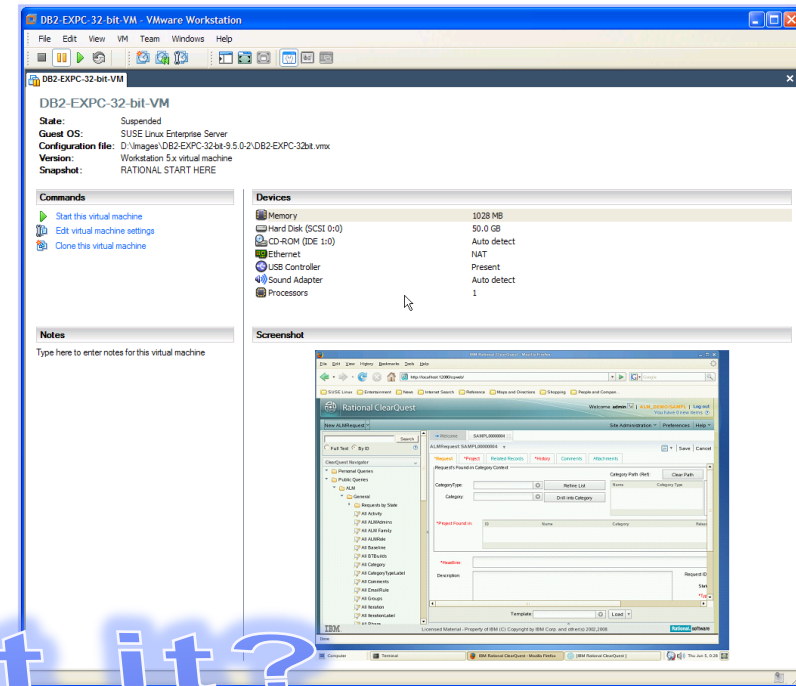
Implementation Time
Reduced by 66%.

Training Time
Reduced by 50%.



Summary and Conclusions

- Deliver on increasing demands for rapid and centralized tool deployments using virtual appliances
- Leverage new out-of-the-box capabilities in ClearQuest to provide a preconfigured Change Management solution
- Delivers OpenUP workflows configured for Agility at Scale and small teams
- Next > Tech preview



Want it?
Share Your
Feedback





QUESTIONS FEEDBACK





THANK YOU

Learn more at:

- [IBM Rational software](#)
- [IBM Rational Software Delivery Platform](#)
- [Process and portfolio management](#)
- [Change and release management](#)
- [Quality management](#)
- [Architecture management](#)
- [Rational trial downloads](#)
- [Leading Innovation Web site](#)
- [developerWorks Rational](#)
- [IBM Rational TV](#)
- [IBM Rational Business Partners](#)

© Copyright IBM Corporation 2008. All rights reserved. The information contained in these materials is provided for informational purposes only, and is provided AS IS without warranty of any kind, express or implied. IBM shall not be responsible for any damages arising out of the use of, or otherwise related to, these materials. Nothing contained in these materials is intended to, nor shall have the effect of, creating any warranties or representations from IBM or its suppliers or licensors, or altering the terms and conditions of the applicable license agreement governing the use of IBM software. References in these materials to IBM products, programs, or services do not imply that they will be available in all countries in which IBM operates. Product release dates and/or capabilities referenced in these materials may change at any time at IBM's sole discretion based on market opportunities or other factors, and are not intended to be a commitment to future product or feature availability in any way. IBM, the IBM logo, the on-demand business logo, Rational, the Rational logo, and other IBM products and services are trademarks of the International Business Machines Corporation, in the United States, other countries or both. Other company, product, or service names may be trademarks or service marks of others.

